

12 Chestnut House

Partridge Drive, off Overdale Road
Downend, Bristol BS16 2RD

1 bed first floor apartment

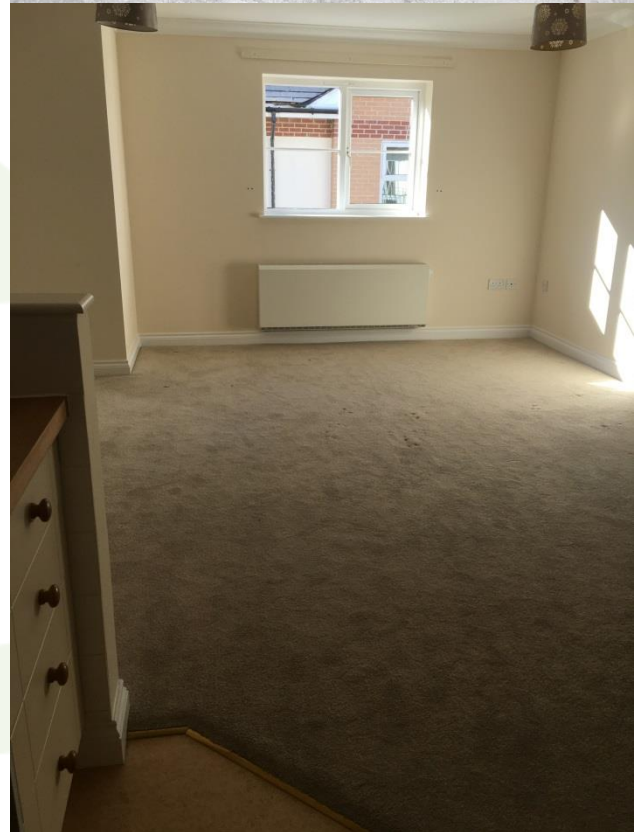
£165,000

12 Chestnut House is a modern 1 bedroom apartment located on the first floor of a purpose built block within Woodland Court Village, a complex of retirement properties located at Downend within easy travelling distance of Bristol and the M4.

Briefly, the property comprises:

- One bedrooms with en-suite
- Open plan Kitchen/Lounge
- Bathroom
- Double Glazing
- 24 hour emergency response system
- Domiciliary care support packages are available
- On-site parking

To arrange a viewing, please contact the
Woodland Court Sales Team on 0117 906 1400.



12 Chestnut House - Accommodation



Lounge (15'4x14'1 approx)

Very spacious and open plan with Kitchen to one end, door to bedroom, wall mounted radiator, TV and telephone points, smoke alarm, ample power sockets and 24 hour emergency call alarm.

Kitchen (8'7x7'7 approx)

Fitted with cream shaker style wall and base units, white tiling above wooden work top, wood effect flooring, single bowl sink with mixer tap, integrated hob with extractor hood, fan assisted electric oven/grill, fridge with freezer box, extractor, smoke alarm, 24 hour emergency call alarm and ample power points. Space for washing machine / dryer.

Bedroom 1 (14'7x8'.4 approx)

This consists of a dressing room area with doubled door wardrobe, entrance to en-suite, wall mounted radiator, TV and telephone points, ample power points, smoke alarm and 24 hour emergency call alarm.

En-suite

White walking shower, hand basin set into a vanity floor cupboard unit below, WC, heated towel rail, 24 hour emergency call alarm and extractor fan.



Communal Facilities

The communal facilities include a residents' restaurant, conservatory, bar/lounge area, library/games room, hair salon, doctor's surgery and a central courtyard garden.

Domiciliary care

Our domiciliary team offers tailored personal care and support for anyone wishing assistance within their own home. Please contact a member of the sales team for more information.